

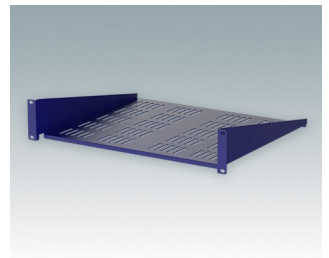
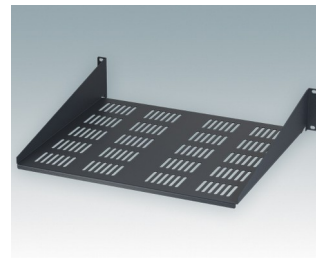
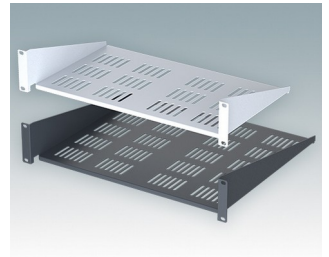
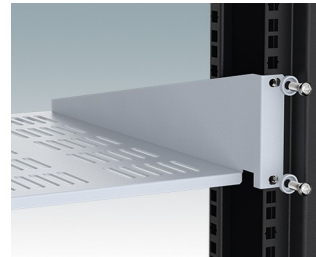
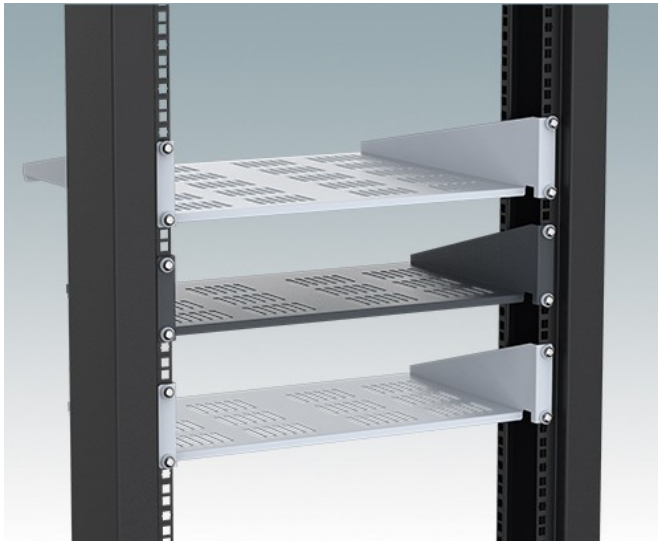
# 19" CANTILEVER SHELVES



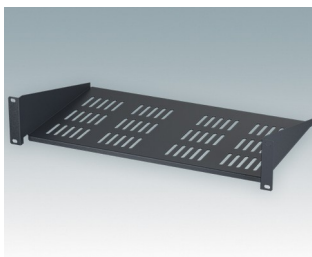
Universal design for mounting to any standard 19" rack or cabinet.

- Conforms to DIN 41494 and 60297-3
- Allow easy installation of equipment that does not have any built-in rack mounting facilities
- Made of CR4 mild steel and painted in a tough powder polyester paint finish
- Slots in the bottom aid in-rack ventilation
- Other sizes can be made to order.

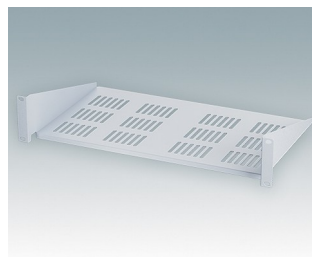
Order your own fully customized version [learn more here >>](#)



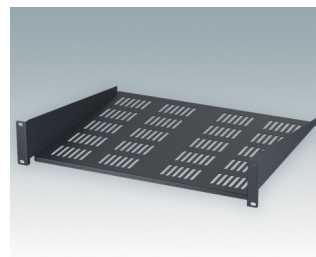
## Select Versions



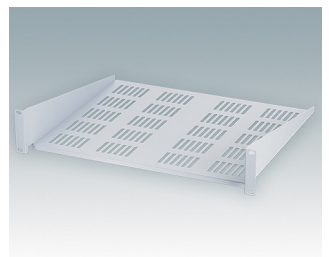
**M6119264**  
19"x2U Cantilever Shelf  
Mild Steel CR4  
Anthracite RAL 7016  
3.47"x19.00"x11.02"



**M6119265**  
19"x2U Cantilever Rack Shelf  
Mild Steel CR4  
Light gray RAL 7035  
3.47"x19.00"x11.02"



**M6119284**  
19"x2U Cantilever Rack Shelf  
Mild Steel CR4  
Anthracite RAL 7016  
3.47"x19.00"x15.75"



**M6119285**  
19"x2U Cantilever Rack Shelf  
Mild Steel CR4  
Light gray RAL 7035  
3.47"x19.00"x15.75"

# 19" CANTILEVER SHELVES

## Accessory



**M5900016**  
19" mounting kit  
Black RAL 9005



**M6000035**  
19" mounting kit  
Light gray RAL 7035

Subject to technical modification without notice. © OKW Enclosures Ltd