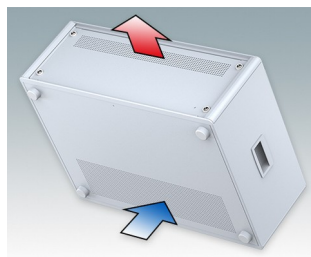
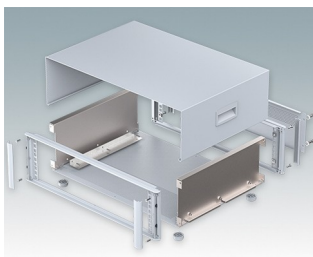


## Modern Desktop Mini-Rack Enclosures to DIN 41494 and IEC 60297-3

- Cohesive design with no visible fixing screws. Robust yet lightweight aluminum construction
- Designed to accept standard 10.5" (42HP) and 19" (84HP) subracks, chassis and front panels
- Die cast bezels fit flush with the case body for a smooth appearance
- Recessed ABS side handles for easy carrying
- 10.5" versions also available with a bail arm
- Removable rear panel and internal subrack/chassis support rails included
- Ventilation holes in base and rear panel
- All case panels fitted with M4 threaded pillars for earth connections
- Molded ABS non-slip feet included
- Supplied fully assembled and ready to use
- Accessory anodized 10.5" and 19" front panels available.

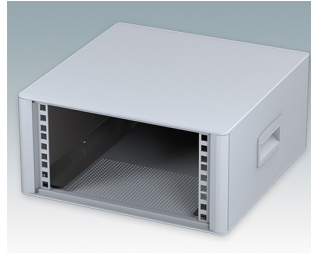
Order your own fully customized version [learn more here >>](#)



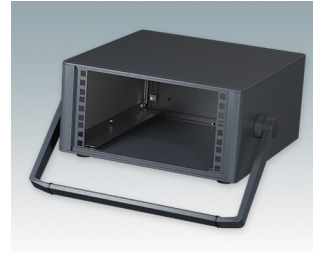
## Select Versions



**M6610344**  
TECHNOMET 10.5" 3Ux13"  
Aluminum  
Anthracite RAL 7016  
6.17"x12.72"x12.99"



**M6610345**  
TECHNOMET 10.5" 3Ux13"  
Aluminum  
Light gray RAL 7035  
6.17"x12.72"x12.99"



**M6610354**  
TECHNOMET 10.5" 3Ux13"  
Aluminum  
Anthracite RAL 7016  
6.17"x12.72"x12.99"



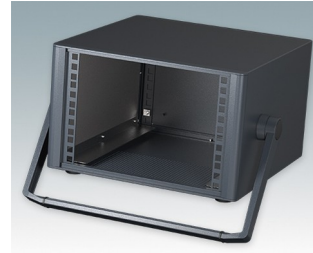
**M6610355**  
TECHNOMET 10.5" 3Ux13"  
Aluminum  
Light gray RAL 7035  
6.17"x12.72"x12.99"



**M6610444**  
TECHNOMET 10.5" 4Ux13"  
Aluminum  
Anthracite RAL 7016  
7.87"x12.72"x12.99"



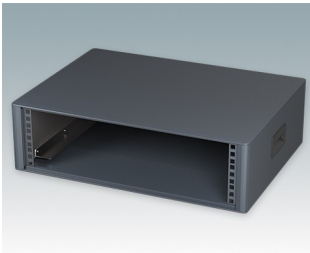
**M6610445**  
TECHNOMET 10.5" 4Ux13"  
Aluminum  
Light gray RAL 7035  
7.87"x12.72"x12.99"



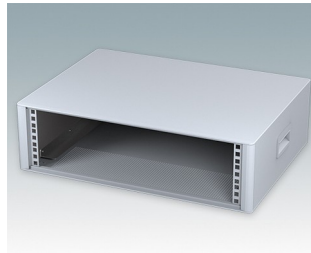
**M6610454**  
TECHNOMET 10.5" 4Ux13"  
Aluminum  
Anthracite RAL 7016  
7.87"x12.72"x12.99"



**M6610455**  
TECHNOMET 10.5" 4Ux13"  
Aluminum  
Light gray RAL 7035  
7.87"x12.72"x12.99"



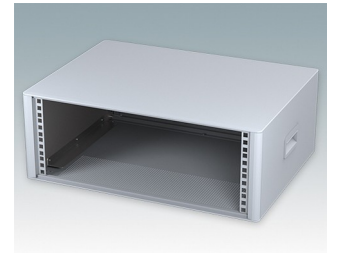
**M6619344**  
TECHNOMET 19" 3Ux15.74"  
Aluminum  
Anthracite RAL 7016  
6.13"x21.22"x15.75"



**M6619345**  
TECHNOMET 19" 3Ux15.74"  
Aluminum  
Light gray RAL 7035  
6.13"x21.22"x15.75"



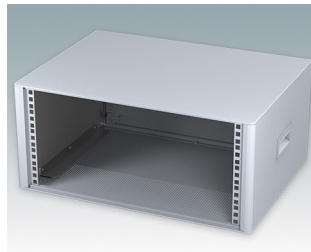
**M6619444**  
TECHNOMET 19" 4Ux15.74"  
Aluminum  
Anthracite RAL 7016  
7.87"x21.22"x15.75"



**M6619445**  
TECHNOMET 19" 4Ux15.74"  
Aluminum  
Light gray RAL 7035  
7.87"x21.22"x15.75"



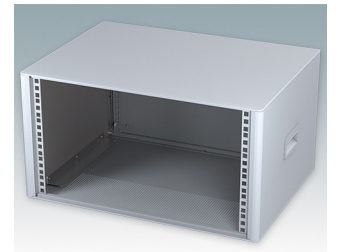
**M6619544**  
TECHNOMET 19" 5Ux15.74"  
Aluminum  
Anthracite RAL 7016  
9.63"x21.22"x15.75"



**M6619545**  
TECHNOMET 19" 5Ux15.74"  
Aluminum  
Light gray RAL 7035  
9.63"x21.22"x15.75"



**M6619644**  
TECHNOMET 19" 6Ux15.74"  
Aluminum  
Anthracite RAL 7016  
11.37"x21.22"x15.75"



**M6619645**  
TECHNOMET 19" 6Ux15.74"  
Aluminum  
Light gray RAL 7035  
11.37"x21.22"x15.75"

## Accessory



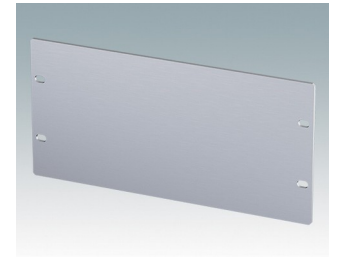
**M5900016**  
19" mounting kit  
Black RAL 9005



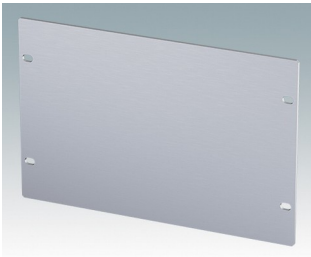
**M5900018**  
19" mounting kit black screws  
Black RAL 9005



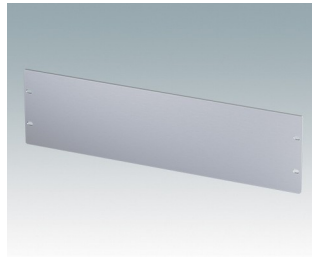
**M6000035**  
19" mounting kit  
Light gray RAL 7035



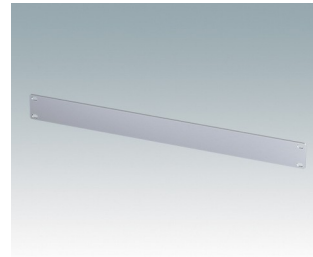
**M6010001**  
Front panel 3Ux10.5"  
Aluminum  
Matt anodized  
10.60"x0.12"x5.22"



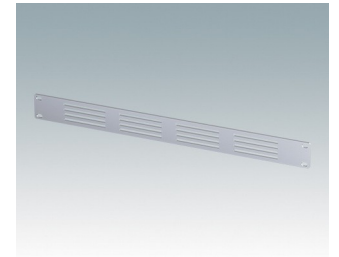
**M6010040**  
Front panel 4Ux10.5"  
Aluminum  
Matt anodized  
10.60"x0.12"x6.97"



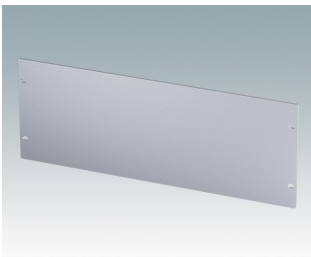
**M6019001**  
Front panel 3Ux19"  
Aluminum  
Matt anodized  
19.00"x0.12"x5.22"



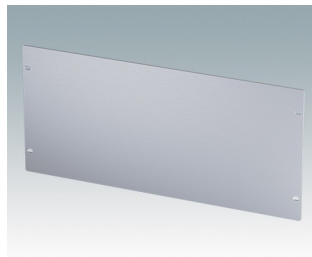
**M6019010**  
Front panel 1Ux19"  
Aluminum  
Matt anodized  
19.00"x0.12"x1.72"



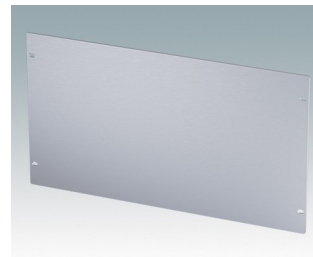
**M6019011**  
Front panel 1Ux19" vented  
Aluminum  
Matt anodized  
19.00"x0.12"x1.72"



**M6019040**  
Front panel 4Ux19"  
Aluminum  
Matt anodized  
19.00"x0.12"x6.97"



**M6019050**  
Front panel 5Ux19"  
Aluminum  
Matt anodized  
19.00"x0.12"x8.72"



**M6019060**  
Front panel 6Ux19"  
Aluminum  
Matt anodized  
19.00"x0.12"x10.47"

Subject to technical modification without notice. © OKW Enclosures Ltd