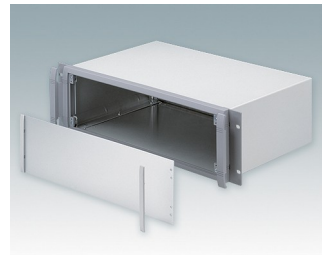
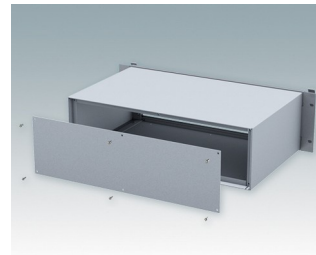
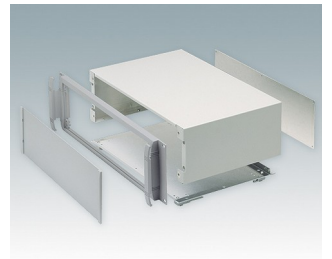
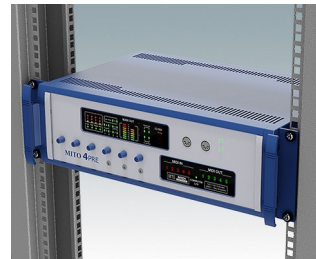


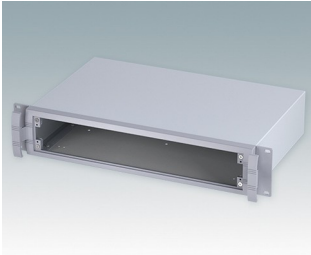
Modern 19" rack mount enclosures to DIN 41494 & IEC 60297-3

- Stylish range of 19" rack cases in aluminum
- Heights: 2U and 3U in two standard depths
- Attractive diecast front bezel incorporating unique 'comfort-handles' and rack mounting ears
- Robust folded case body with removable base
- Removable rear panel
- Front panel (accessory) recessed in bezel for location of membrane keypads
- Mounting holes in base for PCBs
- Molded feet (accessories) can be fitted to the base panel for table top applications
- Cases supplied fully assembled.

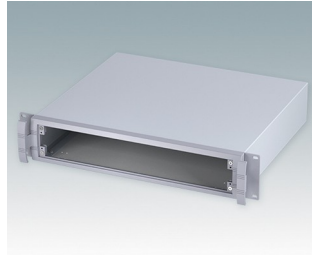
Order your own fully customized version [learn more here >>](#)



Select Versions



M5619225
UNIMET 19" 2Ux11.02"
Aluminum
Light gray/window gray RAL
7035/7040
3.46"x19.00"x11.02"



M5619235
UNIMET 19" 2Ux14.96"
Aluminum
Light gray/window gray RAL
7035/7040
3.46"x19.00"x14.96"

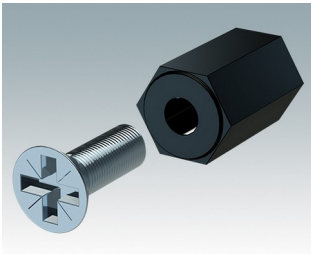


M5619325
UNIMET 19" 3Ux11.02"
Aluminum
Light gray/window gray RAL
7035/7040
5.22"x19.00"x11.02"

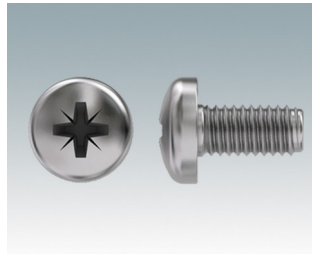


M5619335
UNIMET 19" 3Ux14.96"
Aluminum
Light gray/window gray RAL
7035/7040
5.22"x19.00"x14.96"

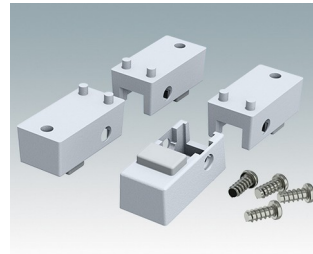
Accessory



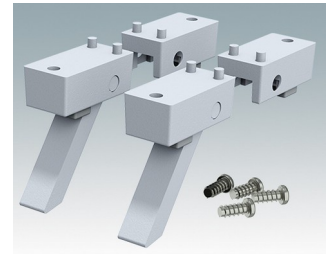
M5600001
PCB mounting kit
PA 6
Black RAL 9005



M5600010
PCB Fixing Screws, M3
Steel
Zinc coated
0.24"



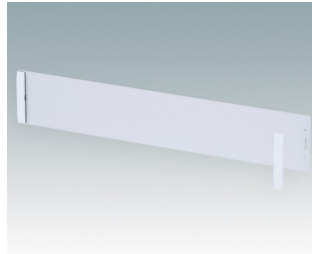
M5600015
Case Feet Kit 1
ABS (UL 94 HB)
Light gray RAL 7035
1.34"x0.67"x0.63"



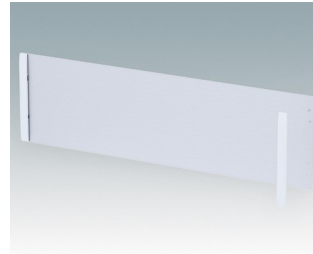
M5600045
Case Feet Kit 2
ABS (UL 94 HB)
Light gray RAL 7035
1.34"x0.67"x0.63"



M5900016
19" mounting kit
Black RAL 9005



M5900020
Front panel kit (2U)
Aluminum
Matt anodized
15.45"x0.08"x2.64"



M5900030
Front panel kit (3U)
Aluminum
Matt anodized
15.45"x0.08"x4.37"



M6000035
19" mounting kit
Light gray RAL 7035

Subject to technical modification without notice. © OKW Enclosures Ltd