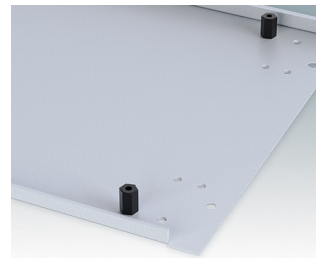
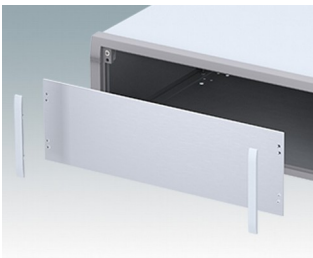
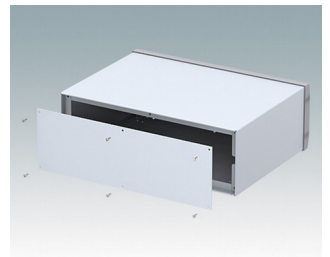
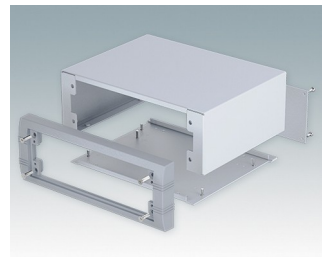


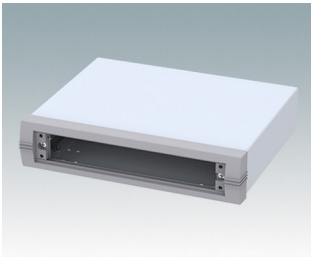
## Modern desktop and portable instrument enclosures

- Stylish, robust and versatile aluminum design in six standard sizes
- With or without a bail arm for portable use
- Die cast front bezel is assembled to the folded aluminum case body
- Removable rear panel - recessed for protection of connectors, switches etc.
- Mounting holes in base for PCBs, chassis etc.
- Anodised aluminum front panels (accessory)
- Four non-slip rubber feet included
- Supplied pre-assembled
- Optional moulded ABS tilt feet (accessory).

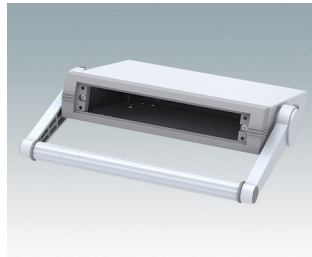
Order your own fully customized version [learn more here >>](#)



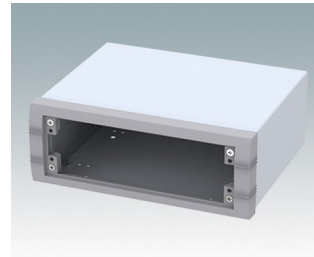
## Select Versions



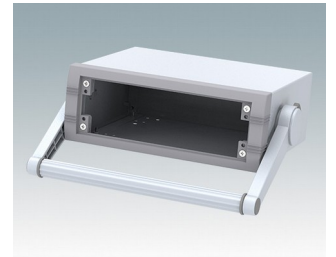
**M5623005**  
UNIMET 1  
Aluminum  
Light gray/window gray RAL 7035/7040  
9.06"x7.48"x1.97"



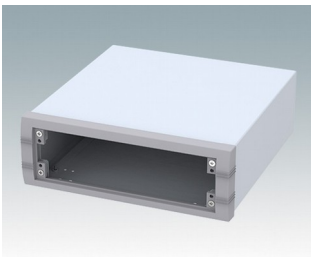
**M5623025**  
UNIMET 1H  
Aluminum  
Light gray/window gray RAL 7035/7040  
9.06"x7.48"x1.97"



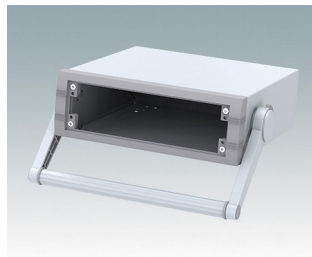
**M5623105**  
UNIMET 2  
Aluminum  
Light gray/window gray RAL 7035/7040  
9.06"x7.48"x3.35"



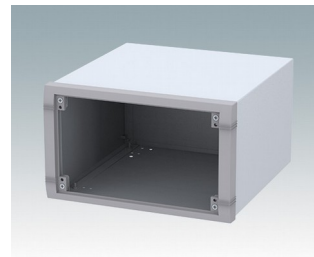
**M5623125**  
UNIMET 2H  
Aluminum  
Light gray/window gray RAL 7035/7040  
9.06"x7.48"x3.35"



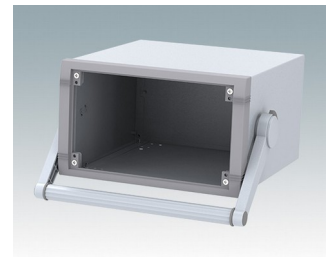
**M5625105**  
UNIMET 3  
Aluminum  
Light gray/window gray RAL 7035/7040  
9.84"x10.24"x3.35"



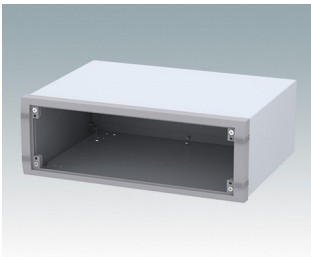
**M5625125**  
UNIMET 3H  
Aluminum  
Light gray/window gray RAL 7035/7040  
9.84"x10.24"x3.35"



**M5625305**  
UNIMET 5  
Aluminum  
Light gray/window gray RAL 7035/7040  
9.84"x10.24"x5.91"



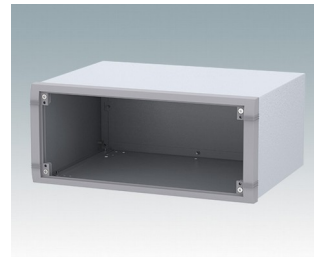
**M5625325**  
UNIMET 5H  
Aluminum  
Light gray/window gray RAL 7035/7040  
9.84"x10.24"x5.91"



**M5635205**  
UNIMET 4  
Aluminum  
Light gray/window gray RAL 7035/7040  
13.78"x10.24"x4.72"



**M5635225**  
UNIMET 4H  
Aluminum  
Light gray/window gray RAL 7035/7040  
13.78"x10.24"x4.72"

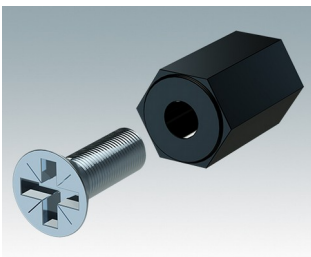


**M5635305**  
UNIMET 6  
Aluminum  
Light gray/window gray RAL 7035/7040  
13.78"x10.24"x5.91"

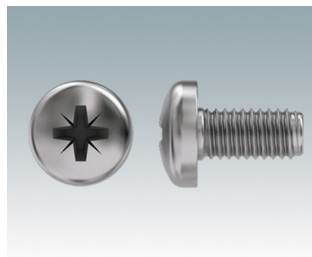


**M5635325**  
UNIMET 6H  
Aluminum  
Light gray/window gray RAL 7035/7040  
13.78"x10.24"x5.91"

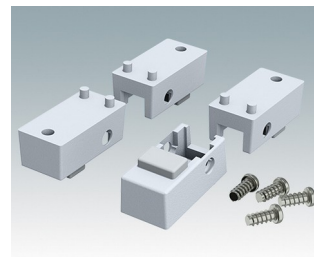
## Accessory



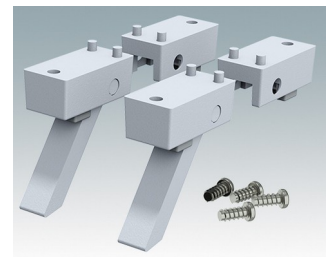
**M5600001**  
PCB mounting kit  
PA 6  
Black RAL 9005



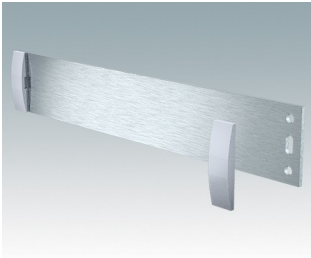
**M5600010**  
PCB Fixing Screws, M3  
Steel  
Zinc coated  
0.24"



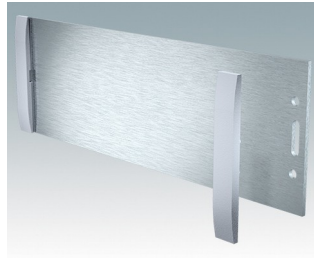
**M5600015**  
Case Feet Kit 1  
ABS (UL 94 HB)  
Light gray RAL 7035  
1.34"x0.67"x0.63"



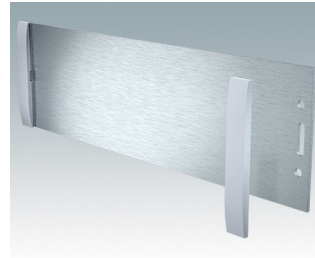
**M5600045**  
Case Feet Kit 2  
ABS (UL 94 HB)  
Light gray RAL 7035  
1.34"x0.67"x0.63"



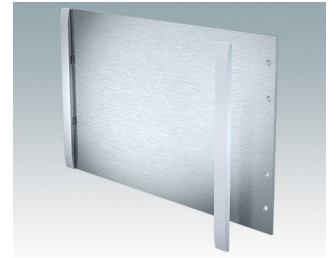
**M5700607**  
Front panel kit (1/1H)  
Aluminum  
Matt anodized  
7.85"x0.08"x1.32"



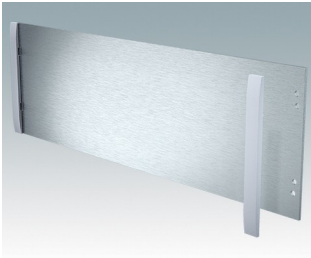
**M5700608**  
Front panel kit (2/2H)  
Aluminum  
Matt anodized  
7.85"x0.08"x2.56"



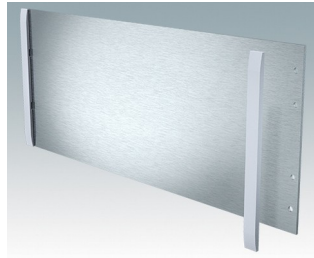
**M5700613**  
Front panel kit (3/3H)  
Aluminum  
Matt anodized  
8.64"x0.08"x2.56"



**M5700616**  
Front panel kit (5/5H)  
Aluminum  
Matt anodized  
8.64"x0.08"x5.12"



**M5700620**  
Front panel kit (4/4H)  
Aluminum  
Matt anodized  
12.58"x0.08"x3.94"



**M5700621**  
Front panel kit (6/6H)  
Aluminum  
Matt anodized  
12.58"x0.08"x5.12"

Subject to technical modification without notice. © OKW Enclosures Ltd