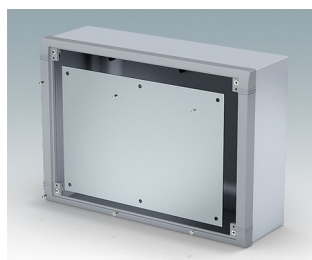
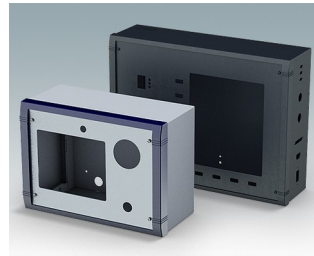


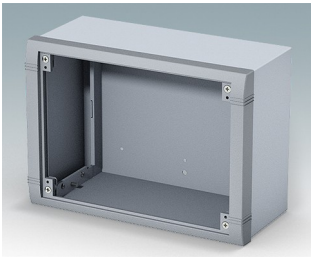
Wall mount enclosures for indoor electronic instruments, controls and HMI

- Very modern design in three standard sizes
- Total access to the electronics during installation and servicing
- Rear section includes holes for fitting PCBs and internal mounting plates
- Cable glands and connectors can be mounted to the underside of the rear section
- Top section fits over the rear panel and also secures the front bezel
- Die cast front bezel provides a modern look to the cases
- Front panels recessed in the bezel to protect controls
- Pre-punched wall mounting points in the rear panel
- Four M4 earth studs provided inside
- Two standard color combinations gray or black
- All fixings supplied with case
- Accessory anodized aluminum front panels
- Accessory internal mounting plate kit and PCB screw pillars.

Order your own fully customized version [learn more here >>](#)



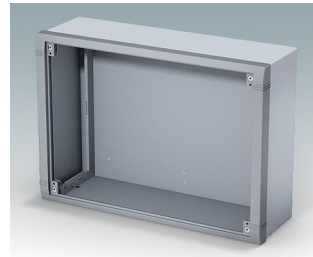
Select Versions



M5825105
Datamet S
Aluminum
Light gray/window gray RAL
7035/7040
9.84"x7.09"x4.59"



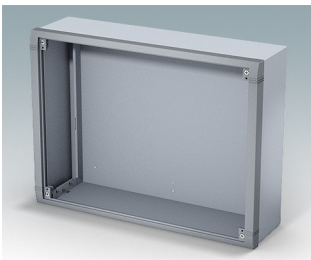
M5825109
Datamet S
Aluminum
Black RAL 9005
9.84"x7.09"x4.59"



M5835105
Datamet M
Aluminum
Light gray/window gray RAL
7035/7040
13.78"x9.84"x4.59"



M5835109
Datamet M
Aluminum
Black RAL 9005
13.78"x9.84"x4.59"

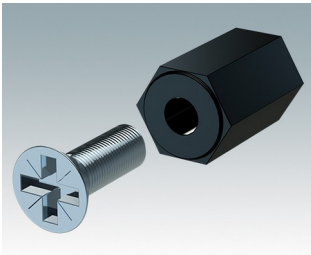


M5840105
Datamet L
Aluminum
Light gray/window gray RAL
7035/7040
15.75"x11.81"x4.59"

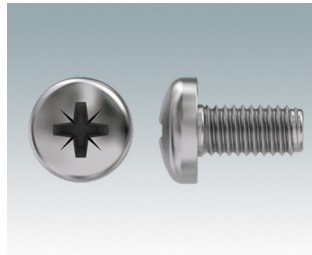


M5840109
Datamet L
Aluminum
Black RAL 9005
15.75"x11.81"x4.59"

Accessory



M5600001
PCB mounting kit
PA 6
Black RAL 9005



M5600010
PCB Fixing Screws, M3
Steel
Zinc coated
0.24"



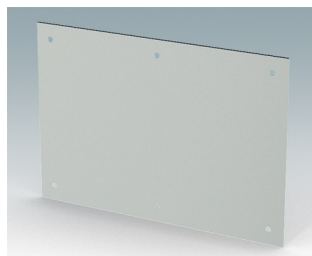
M5800025
Front panel S
Aluminum
Matt anodized
8.66"x0.08"x6.28"



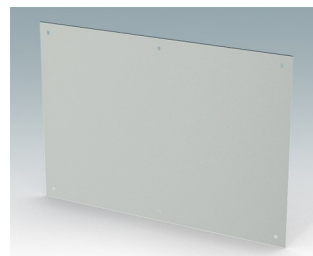
M5800035
Front panel M
Aluminum
Matt anodized
12.60"x0.08"x9.04"



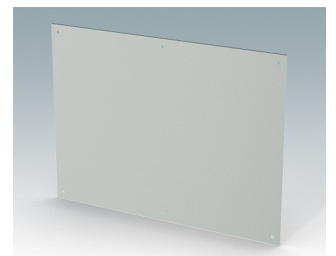
M5800040
Front panel L
Aluminum
Matt anodized
14.57"x0.08"x11.00"



M5804125
Mounting plate kit S
Aluminum
Matt anodized
6.89"x4.72"x0.06"



M5804135
Mounting plate kit M
Aluminum
Matt anodized
10.83"x7.48"x0.06"



M5804140
Mounting plate kit L
Aluminum
Matt anodized
12.80"x9.45"x0.06"

Subject to technical modification without notice. © OKW Enclosures Ltd