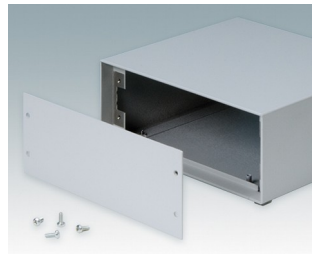
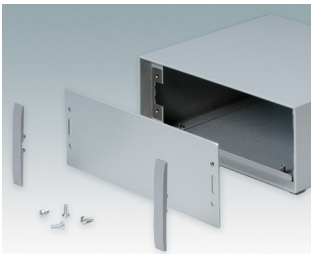
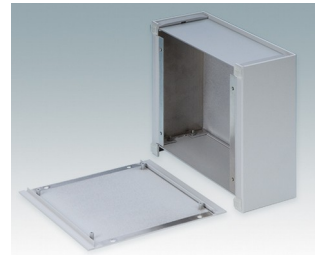
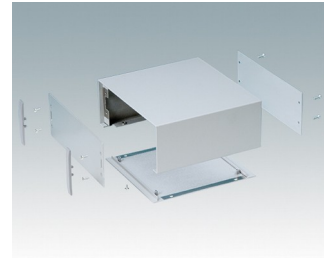
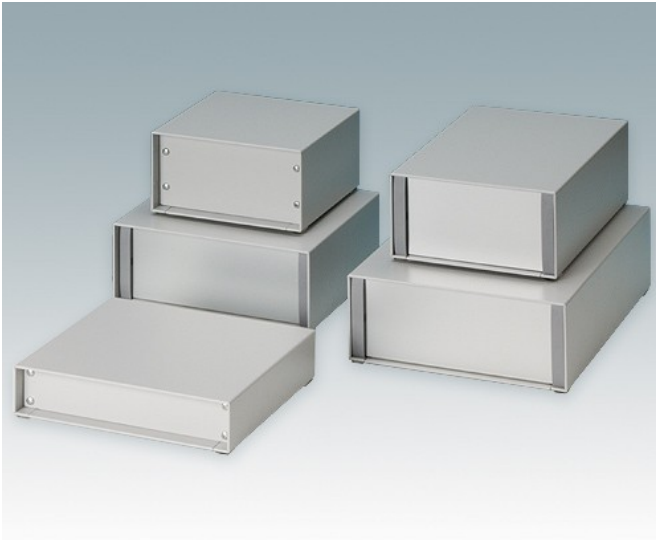


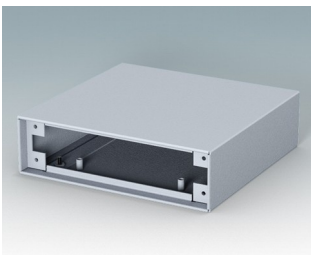
For small desktop and portable electronics

- Compact aluminum instrument enclosures in eight standard sizes
- Stylish, lightweight and versatile design, simple and fast assembly technique
- Removable base panel pre-fitted with four M3 PCB screw pillars
- Accessories: anodized front/rear panels and painted front/rear panels
- Front panels are recessed by 0.135" or 0.551"
- Four self-adhesive non-slip feet included.

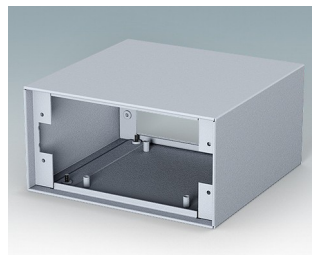
Order your own fully customized version [learn more here >>](#)



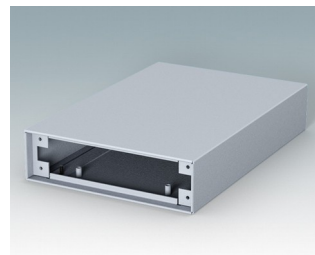
Select Versions



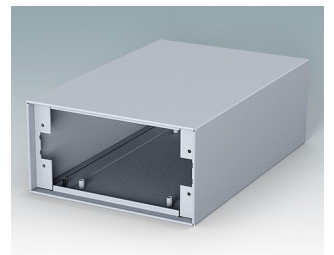
M5113115
MINIMET 1
Aluminum
Light gray RAL 7035
5.30"x5.12"x1.52"



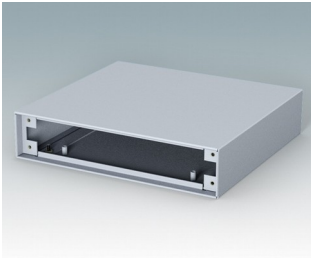
M5113125
MINIMET 2
Aluminum
Light gray RAL 7035
5.30"x5.12"x2.76"



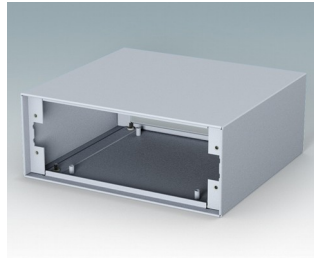
M5113215
MINIMET 3
Aluminum
Light gray RAL 7035
5.30"x7.87"x1.52"



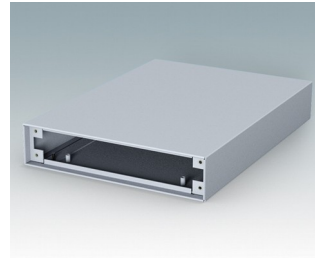
M5113225
MINIMET 4
Aluminum
Light gray RAL 7035
5.30"x7.87"x2.76"



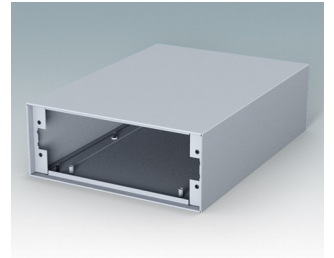
M5117115
MINIMET 5
Aluminum
Light gray RAL 7035
6.87"x6.30"x1.52"



M5117125
MINIMET 6
Aluminum
Light gray RAL 7035
6.87"x6.30"x2.76"

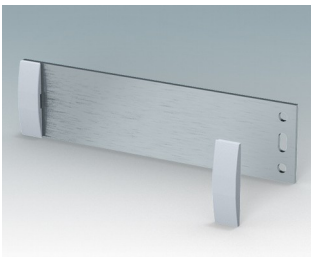


M5117215
MINIMET 7
Aluminum
Light gray RAL 7035
6.87"x9.45"x1.52"

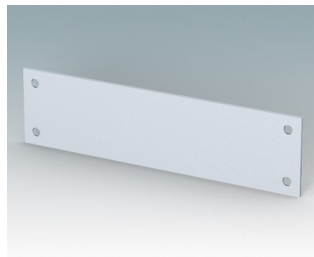


M5117225
MINIMET 8
Aluminum
Light gray RAL 7035
6.87"x9.45"x2.76"

Accessory



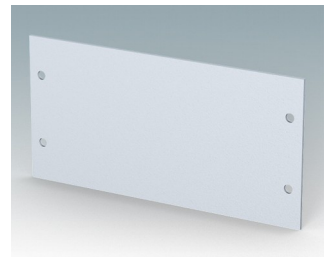
M5100510
Front/rear panel AN (size 1 & 3)
Aluminum
Matt anodized
5.10"x0.08"x1.32"



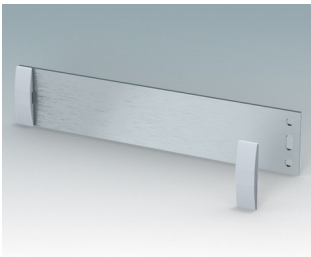
M5100515
Front/rear panel PN (size 1 & 3)
Aluminum
Light gray RAL 7035
5.10"x0.06"x1.32"



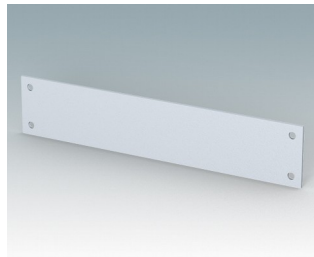
M5100520
Front/rear panel kit AN (size 2 & 4)
Aluminum
Matt anodized
5.10"x0.08"x2.56"



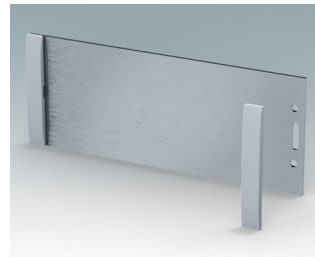
M5100525
Front/rear panel PN (size 2 & 4)
Aluminum
Light gray RAL 7035
5.10"x0.06"x2.56"



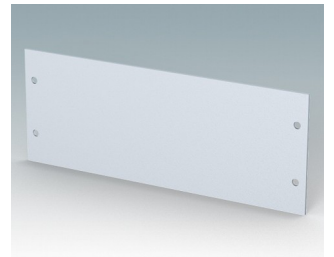
M5100550
Front/rear panel kit AN (size 5 & 7)
Aluminum
Matt anodized
6.67"x0.08"x1.32"



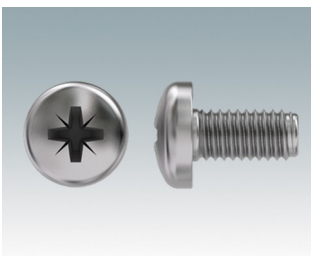
M5100555
Front panel PN (size 5 & 7)
Aluminum
Light gray RAL 7035
6.67"x0.06"x1.32"



M5100560
Front/rear panel kit AN (size 6 & 8)
Aluminum
Matt anodized
6.67"x0.08"x2.56"



M5100565
Front/rear panel PN (size 6 & 8)
Aluminum
Light gray RAL 7035
6.67"x0.06"x2.56"



M5600010
PCB Fixing Screws, M3
Steel
Zinc coated
0.24"