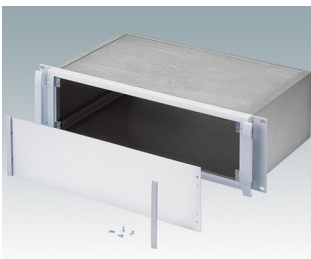
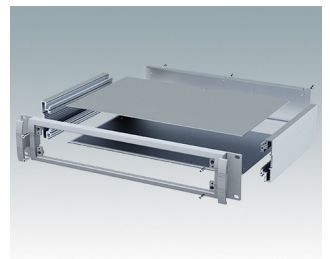
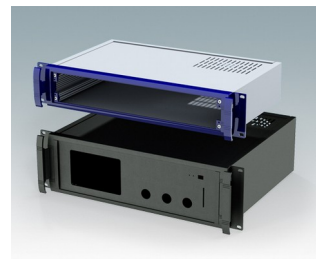
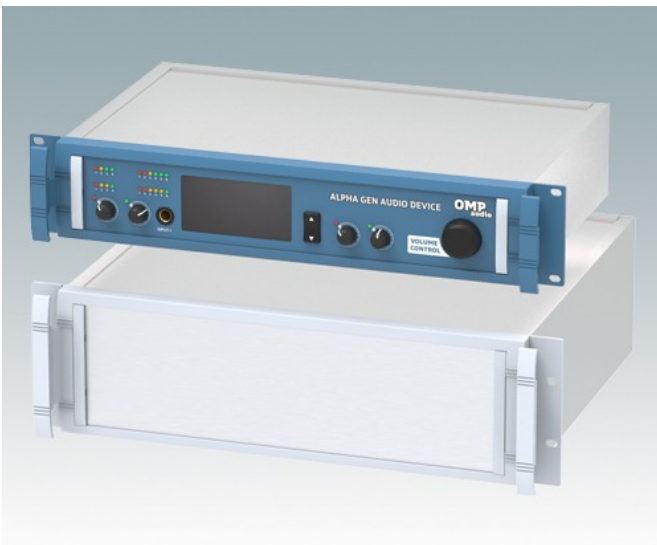


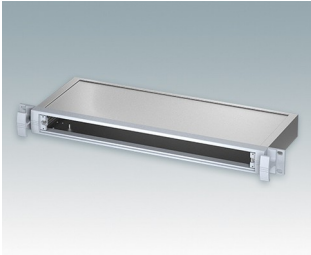
## Robust 19" rack mount enclosures to DIN 41494 and IEC 60297-3

- Exclusive range of 19" rack cases in aluminium in 2U and 3U sizes
- Three standard depths, custom sizes to order
- Attractive diecast front bezel incorporating unique 'comfort-handles' and rack mounting ears powder painted light gray, RAL 7035
- Robust case body assembly includes flat top and base panels, two side extrusions and the rear panel
- Side extrusions, top, base and rear panels are supplied coated in **Iridite NCP** clear conductive finish
- Internal guide rails for PCBs and chassis plates
- Front panel (accessory) recessed in bezel for locating keypads or labels
- Accessory internal mounting plates
- Cases supplied fully assembled.

Order your own fully customized version [learn more here >>](#)



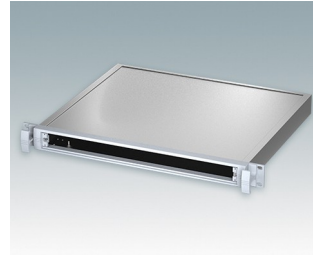
## Select Versions



**M5910015**  
 METTEC 19" 1Ux6.59"  
 Aluminum  
 Light gray RAL 7035  
 1.73"x19.00"x6.59"



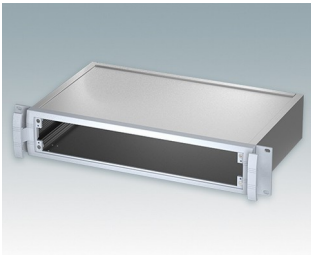
**M5910025**  
 METTEC 19" 1Ux10.35"  
 Aluminum  
 Light gray RAL 7035  
 1.73"x19.00"x10.53"



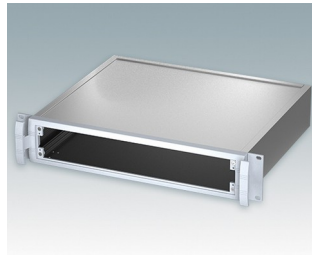
**M5910035**  
 METTEC 19" 1Ux14.46"  
 Aluminum  
 Light gray RAL 7035  
 1.73"x19.00"x14.47"



**M5920015**  
 METTEC 19" 2Ux6.59"  
 Aluminum  
 Light gray RAL 7035  
 3.46"x19.00"x6.59"



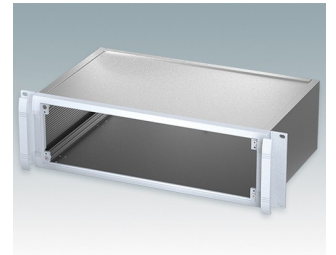
**M5920025**  
 METTEC 19" 2Ux10.35"  
 Aluminum  
 Light gray RAL 7035  
 3.46"x19.00"x10.53"



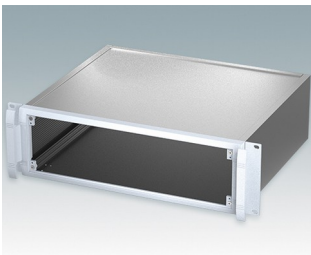
**M5920035**  
 METTEC 19" 2Ux14.46"  
 Aluminum  
 Light gray RAL 7035  
 3.46"x19.00"x14.47"



**M5930015**  
 METTEC 19" 3Ux6.59"  
 Aluminum  
 Light gray RAL 7035  
 5.22"x19.00"x6.59"

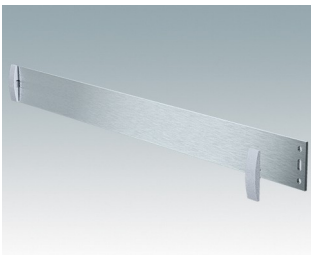


**M5930025**  
 METTEC 19" 3Ux10.35"  
 Aluminum  
 Light gray RAL 7035  
 5.22"x19.00"x10.53"



**M5930035**  
 METTEC 19" 3Ux14.46"  
 Aluminum  
 Light gray RAL 7035  
 5.22"x19.00"x14.47"

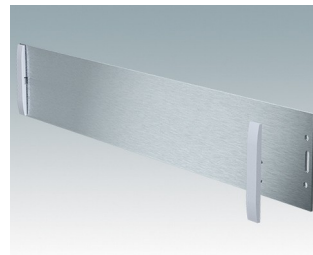
## Accessory



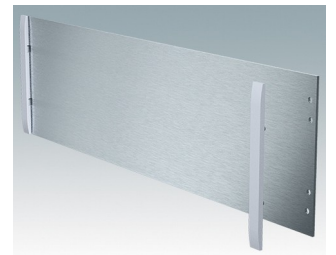
**M5900010**  
 Front panel kit (1U)  
 Aluminum  
 Matt anodized  
 15.45"x0.08"x1.32"



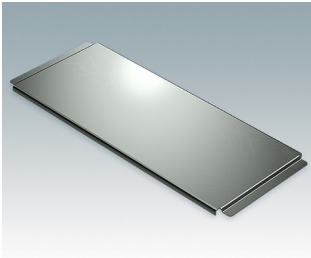
**M5900016**  
 19" mounting kit  
 Black RAL 9005



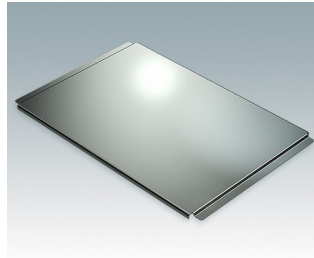
**M5900020**  
 Front panel kit (2U)  
 Aluminum  
 Matt anodized  
 15.45"x0.08"x2.64"



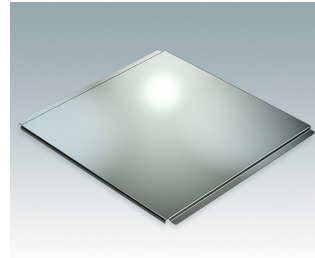
**M5900030**  
 Front panel kit (3U)  
 Aluminum  
 Matt anodized  
 15.45"x0.08"x4.37"



**M5900201**  
Chassis plate (6.59")  
Aluminum  
Natural finish  
14.84"x5.87"x0.30"



**M5900202**  
Chassis plate (10.35")  
Aluminum  
Natural finish  
14.84"x9.80"x0.30"



**M5900203**  
Chassis plate (14.46")  
Aluminum  
Natural finish  
14.84"x13.74"x0.30"



**M6000035**  
19" mounting kit  
Light gray RAL 7035

Subject to technical modification without notice. © OKW Enclosures Ltd