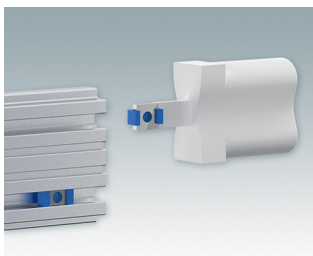
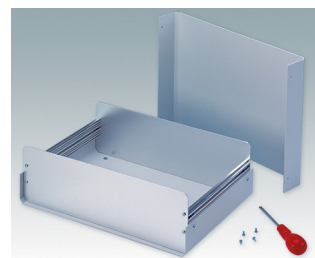
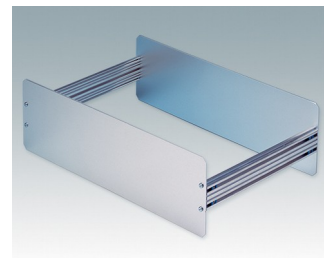


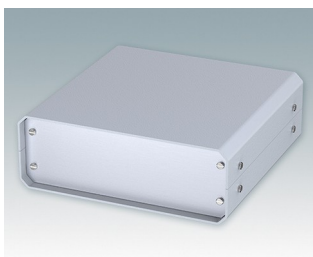
Versatile design ideal for customizing

- Attractive and practical instrument enclosures with simple and fast assembly
- Easily customized to your exact specifications
- Ten standard sizes available in light gray and black
- Removable internal chassis
- PCB guide rails in the assembly extrusions
- Anodized aluminum front and rear panels included
- Front panels recessed to protect controls
- Four push-in non-slip rubber feet included.

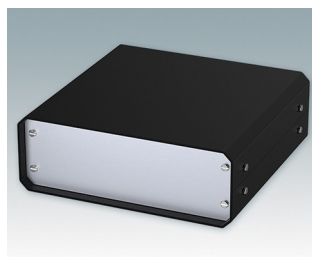
Order your own fully customized version [learn more here >>](#)



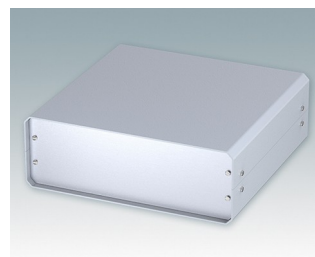
Select Versions



M5501110
UNICASE 1
Aluminum
Light gray RAL 7035
7.28"x7.09"x2.56"



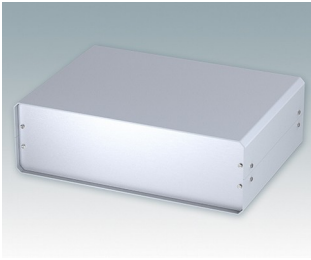
M5501119
UNICASE 1
Aluminum
Black RAL 9005
7.28"x7.09"x2.56"



M5502110
UNICASE 2
Aluminum
Light gray RAL 7035
10.24"x9.84"x3.54"



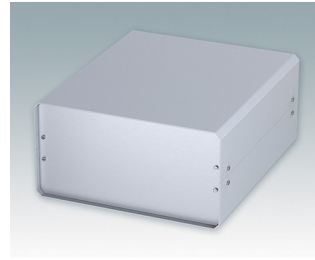
M5502119
UNICASE 2
Aluminum
Black RAL 9005
10.24"x9.84"x3.54"



M5503110
UNICASE 3
Aluminum
Light gray RAL 7035
13.78"x9.84"x4.33"



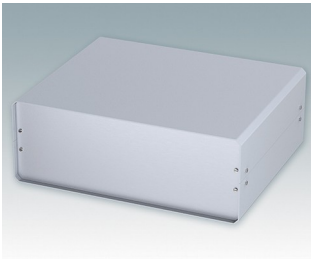
M5503119
UNICASE 3
Aluminum
Black RAL 9005
13.78"x9.84"x4.33"



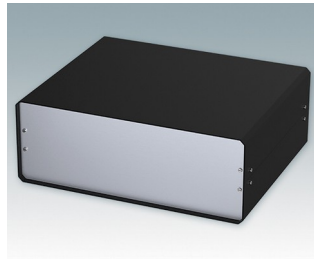
M5504110
UNICASE 4
Aluminum
Light gray RAL 7035
10.28"x11.81"x5.30"



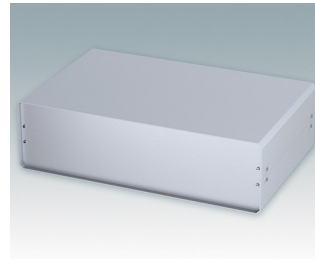
M5504119
UNICASE 4
Aluminum
Black RAL 9005
10.28"x11.81"x5.30"



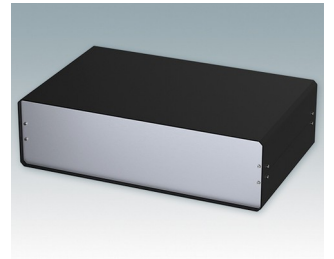
M5505110
UNICASE 5
Aluminum
Light gray RAL 7035
14.45"x11.81"x5.30"



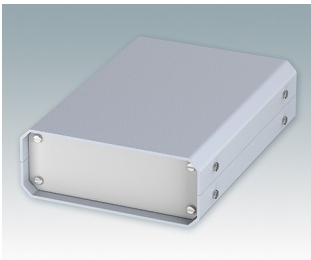
M5505119
UNICASE 5
Aluminum
Black RAL 9005
14.45"x11.81"x5.30"



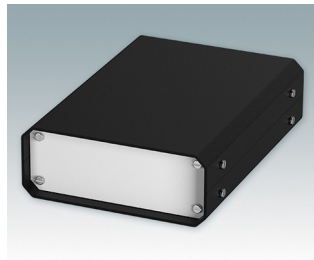
M5506110
UNICASE 6
Aluminum
Light gray RAL 7035
18.66"x11.81"x5.30"



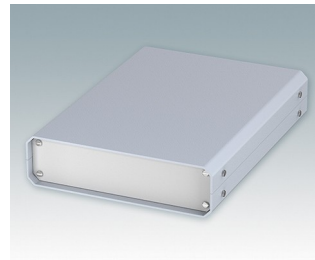
M5506119
UNICASE 6
Aluminum
Black RAL 9005
18.66"x11.81"x5.30"



M5511110
UNICASE SL1
Aluminum
Light gray RAL 7035
5.12"x7.09"x1.97"



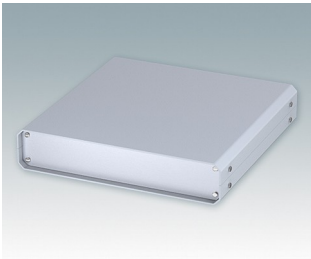
M5511119
UNICASE SL1
Aluminum
Black RAL 9005
5.12"x7.09"x1.97"



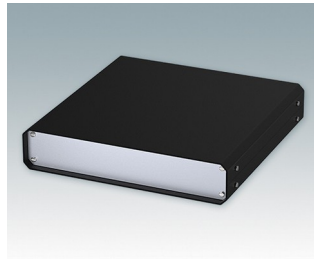
M5512110
UNICASE SL2
Aluminum
Light gray RAL 7035
7.28"x9.84"x1.97"



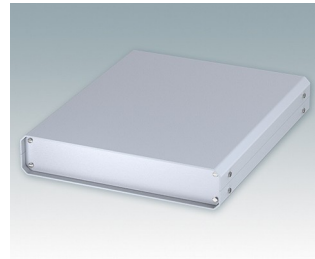
M5512119
UNICASE SL2
Aluminum
Black RAL 9005
7.28"x9.84"x1.97"



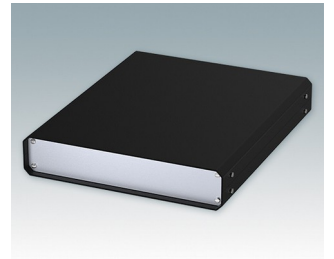
M5513110
UNICASE SL3
Aluminum
Light gray RAL 7035
9.84"x9.84"x1.97"



M5513119
UNICASE SL3
Aluminum
Black RAL 9005
9.84"x9.84"x1.97"

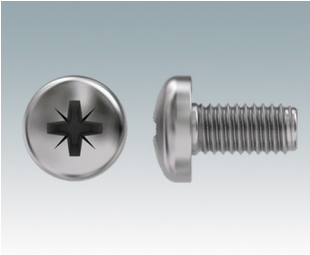


M5514110
UNICASE SL4
Aluminum
Light gray RAL 7035
9.84"x11.81"x1.97"



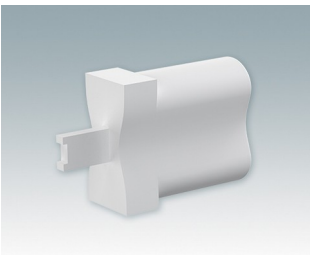
M5514119
UNICASE SL4
Aluminum
Black RAL 9005
9.84"x11.81"x1.97"

Accessory "screws"



M5600010
PCB Fixing Screws, M3
Steel
Zinc coated
0.24"

Accessory



M5500001
Unicase Assembly Tool
PA 2200 (Polyamide)
White
1.73"x0.51"x1.06"

Subject to technical modification without notice. © OKW Enclosures Ltd